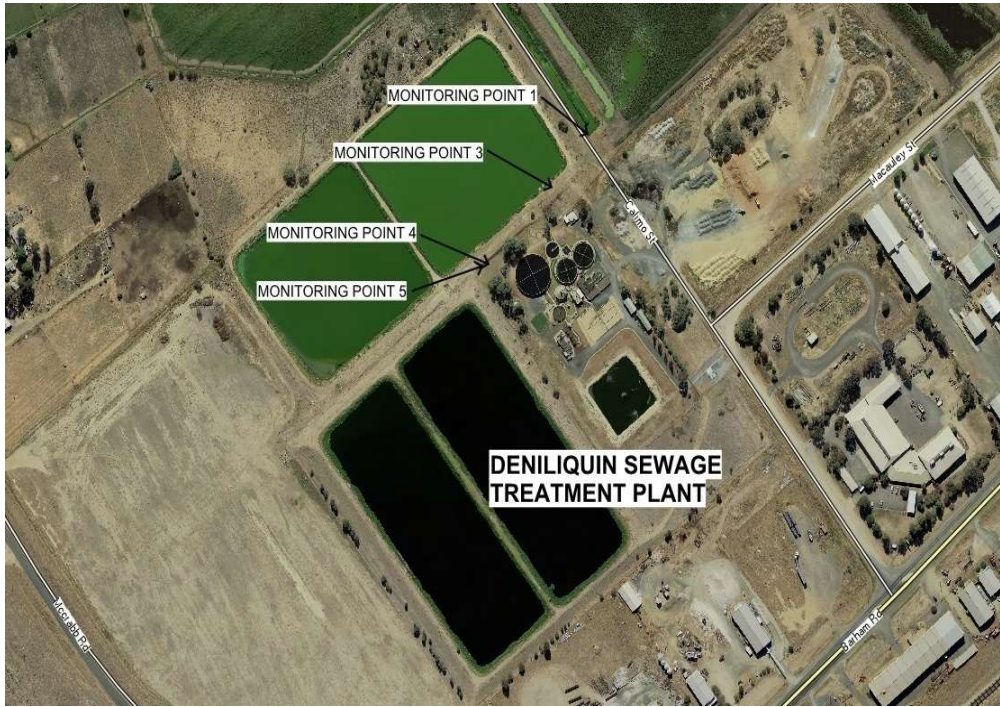


**POLLUTION MONITORING DATA**  
**DENILIQVIN SEWAGE TREATMENT SYSTEM**



**Environment Protection Licence No.:** 1694

Link to full licence on EPA website:

<http://www.epa.nsw.gov.au/prpoeoapp/>

**Licensee:** Edward River Council, PO Box 270 Deniliquin NSW 2710

**Address of facility:** Calimo Street, Deniliquin NSW

**Monitoring Point 1**

**Location:** Outlet from the Northern end of the Pond 4 into the drainage channel

**Date data Published:** 16th of March 2023

**NOTE:** No discharged was recorded from Point 1 for the reporting month of February due to the operation of the effluent reuse scheme. No samples were taken for analysis.

**Monitoring Point 3**

**Location:** Flow meter downstream of Pond 4 outlet

**Date data Published:** 16th of March 2023

**Monitoring Period** 1st February 2023 to 28th February 2023

**NOTE:** No flow was recorded at Point 3 for the reporting month of February due to the operation of the effluent reuse scheme.

**Monitoring Point 4**

**Location:** Effluent Reuse Pump Station adjacent Pond 4

**Date data Published:** 16th of March 2023

**Date data obtained:** 23rd of February 2023

**Date Sampled:** 8th of February 2023

| Pollutant                 | Unit      | Monitoring frequency required by licence | Measurement |
|---------------------------|-----------|--|-------------|
| Biochemical Oxygen Demand | mg/l      | Monthly                                  | 15          |
| Chlorophyll-a             | mg/m3     | Monthly                                  | 116         |
| Conductivity              | uS/cm     | Monthly                                  | 720         |
| Escherichia coli          | cfu/100ml | Monthly                                  | 10          |
| Nitrogen (total)          | mg/l      | Monthly                                  | 8           |
| Oil and Grease            | mg/l      | Monthly                                  | 1           |
| pH                        | pH units  | Monthly                                  | 9.0         |
| Phosphorus (total)        | mg/l      | Monthly                                  | 3.33        |
| Total Suspended Solids    | mg/l      | Monthly                                  | 59          |

**Monitoring Point 5**

**Location:** Flow meter downstream of Effluent Pump Station

**Date data Published:** 16th March 2023

**Monitoring Period** 1st February 2023 to 28th February 2023

| Item       | Unit   | Monitoring frequency required by licence | Min. value | Max. value | Volume limit | Exceeds limit (yes/no) |
|------------|--------|--|------------|------------|--------------|------------------------|
| Daily flow | kl/day | continuous                               | 824        | 1209       | 4000         | No                     |

.....end of report .....