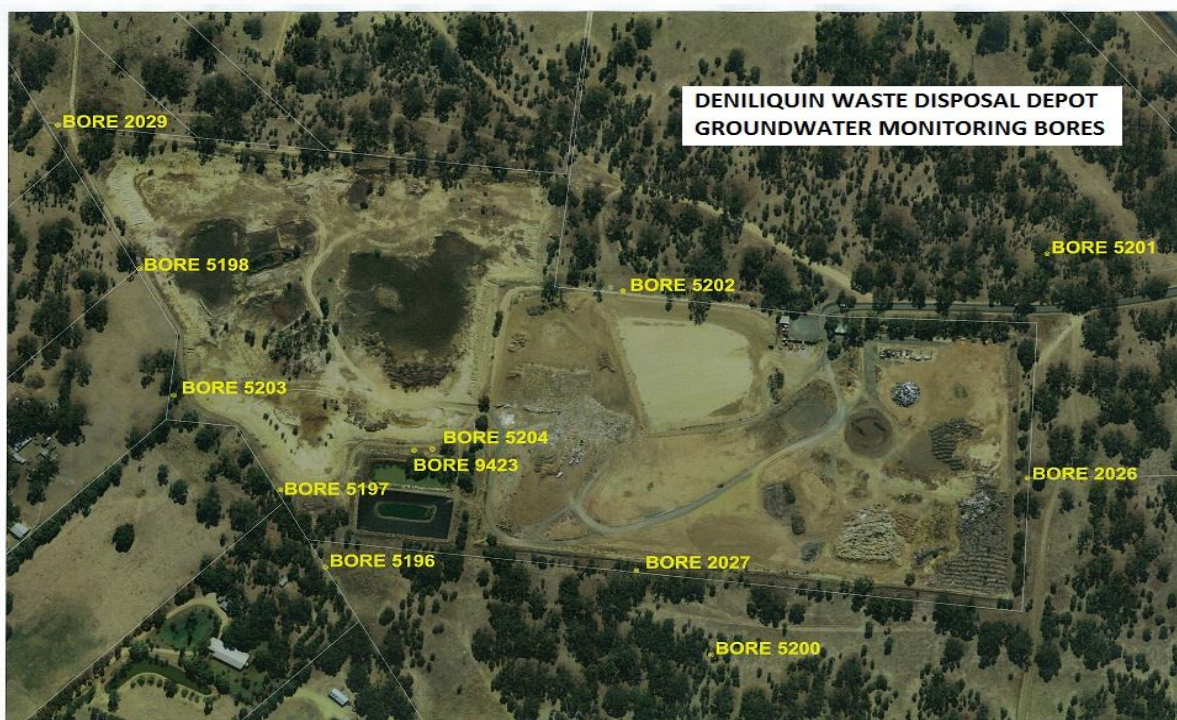


POLLUTION MONITORING DATA DENILIKUIN WASTE DISPOSAL DEPOT



Environment Protection Licence No.: [6188](#)

Link to full licence on EPA website:

<http://www.environment.nsw.gov.au/prpoeoapp/ViewPOEOLicence.aspx?DOCID=31285&SYSUID=1&LICID=6188>

Licensee: Edward River Council, PO Box 270 Deniliquin NSW 2710

Address of facility: Hay Road, Deniliquin NSW 2710

Monitoring Point 1

Location: Bore 5196

Date data Published: 03-Nov-23

Date data obtained by Licensee: 12-Oct-23

Date Sampled: 26-Sep-23

Pollutant	Unit	Monitoring frequency required by licence	Measurement
Alkalinity	mg/l	Yearly	68
Ammonia	mg/l	Every 6 months	0.019
Arsenic	mg/l	Yearly	<0.001
Cadmium	mg/l	Yearly	<0.001
Calcium	mg/l	Yearly	74
Chloride	mg/l	Yearly	990
Chromium	mg/l	Every 6 months	<0.01
Fluoride	mg/l	Yearly	<0.1
Iron	mg/l	Yearly	0.05
Lead	mg/l	Yearly	<0.01
Magnesium	mg/l	Yearly	120
Manganese	mg/l	Yearly	0.012
Mercury	mg/l	Yearly	<0.0001
Nitrate	mg/l	Every 6 months	0.12
pH	pH	Every 6 months	5.8
Potassium	mg/l	Every 6 months	6.7
Sodium	mg/l	Yearly	380
Standing Water Level	metres	Every 6 months	81.890
Sulphate	mg/l	Yearly	180
Total Dissolved Solids	us/cm	Every 6 months	2200
Total Organic Carbon	mg/l	Yearly	1.1
E.coli	per100ml	Every 6 months	<1

Monitoring Point 2**Location: Bore 5197****Date data Published:** 03-Nov-23**Date data obtained by Licencee:** 12-Oct-23**Date Sampled:** 26-Sep-23

Pollutant	Unit	Monitoring frequency required by licence	Measurement
Alkalinity	mg/l	Yearly	320
Ammonia	mg/l	Every 6 months	6.9
Arsenic	mg/l	Yearly	<0.001
Cadmium	mg/l	Yearly	<0.001
Calcium	mg/l	Yearly	200
Chloride	mg/l	Yearly	1700
Chromium	mg/l	Every 6 months	<0.01
Fluoride	mg/l	Yearly	0.1
Iron	mg/l	Yearly	0.04
Lead	mg/l	Yearly	<0.01
Magnesium	mg/l	Yearly	220
Manganese	mg/l	Yearly	0.94
Mercury	mg/l	Yearly	<0.0001
Nitrate	mg/l	Every 6 months	2.6
pH	pH	Every 6 months	6.3
Potassium	mg/l	Every 6 months	22
Sodium	mg/l	Yearly	660
Standing Water Level	metres	Every 6 months	81.830
Sulphate	mg/l	Yearly	310
Total Dissolved Solids	us/cm	Every 6 months	4100
Total Organic Carbon	mg/l	Yearly	8.9
E.coli	per100ml	Every 6 months	<1

Monitoring Point 3**Location: Bore 5198****Date data Published:** 03-Nov-23**Date data obtained by Licencee:** 12-Oct-23**Date Sampled:** 26-Sep-23

Pollutant	Unit	Monitoring frequency required by licence	Measurement
Alkalinity	mg/l	Yearly	57
Ammonia	mg/l	Every 6 months	0.024
Arsenic	mg/l	Yearly	<0.001
Cadmium	mg/l	Yearly	<0.001
Calcium	mg/l	Yearly	40
Chloride	mg/l	Yearly	510
Chromium	mg/l	Every 6 months	<0.01
Fluoride	mg/l	Yearly	<0.1
Iron	mg/l	Yearly	1.2
Lead	mg/l	Yearly	<0.01
Magnesium	mg/l	Yearly	48
Manganese	mg/l	Yearly	0.17
Mercury	mg/l	Yearly	<0.0001
Nitrate	mg/l	Every 6 months	0.006
pH	pH	Every 6 months	6.1
Potassium	mg/l	Every 6 months	8.8
Sodium	mg/l	Yearly	230
Standing Water Level	metres	Every 6 months	81.880
Sulphate	mg/l	Yearly	77
Total Dissolved Solids	us/cm	Every 6 months	1100
Total Organic Carbon	mg/l	Yearly	2.2
E.coli	per100ml	Every 6 months	<1

Monitoring Point 4**Location: Bore 5204****Date data Published:** 03-Nov-23**Date data obtained by Licencee:** 12-Oct-23**Date Sampled:** 26-Sep-23

Pollutant	Unit	Monitoring frequency required by licence	Measurement
Alkalinity	mg/l	Yearly	380
Ammonia	mg/l	Every 6 months	19
Arsenic	mg/l	Yearly	0.009
Cadmium	mg/l	Yearly	<0.001
Calcium	mg/l	Yearly	170
Chloride	mg/l	Yearly	1600
Chromium	mg/l	Every 6 months	<0.01
Fluoride	mg/l	Yearly	0.1
Iron	mg/l	Yearly	4.5
Lead	mg/l	Yearly	<0.01
Magnesium	mg/l	Yearly	210
Manganese	mg/l	Yearly	1.2
Mercury	mg/l	Yearly	<0.0001
Nitrate	mg/l	Every 6 months	<0.005
pH	pH	Every 6 months	6.4
Potassium	mg/l	Every 6 months	24
Sodium	mg/l	Yearly	730
Standing Water Level	metres	Every 6 months	81.915
Sulphate	mg/l	Yearly	330
Total Dissolved Solids	us/cm	Every 6 months	3900
Total Organic Carbon	mg/l	Yearly	14
E.coli	per100ml	Every 6 months	<1

Monitoring Point 5**Location: Bore 5200****Date data Published:** 03-Nov-23**Date data obtained by Licencee:** 12-Oct-23**Date Sampled:** 26-Sep-23

Pollutant	Unit	Monitoring frequency required by licence	Measurement
Alkalinity	mg/l	Yearly	220
Ammonia	mg/l	Every 6 months	0.072
Arsenic	mg/l	Yearly	0.002
Cadmium	mg/l	Yearly	<0.001
Calcium	mg/l	Yearly	310
Chloride	mg/l	Yearly	7800
Chromium	mg/l	Every 6 months	<0.01
Fluoride	mg/l	Yearly	0.17
Iron	mg/l	Yearly	1.7
Lead	mg/l	Yearly	<0.01
Magnesium	mg/l	Yearly	830
Manganese	mg/l	Yearly	0.07
Mercury	mg/l	Yearly	<0.0001
Nitrate	mg/l	Every 6 months	<0.005
pH	pH	Every 6 months	6.1
Potassium	mg/l	Every 6 months	11
Sodium	mg/l	Yearly	3700
Standing Water Level	metres	Every 6 months	81.985
Sulphate	mg/l	Yearly	1800
Total Dissolved Solids	us/cm	Every 6 months	16000
Total Organic Carbon	mg/l	Yearly	3.2
E.coli	per100ml	Every 6 months	<1

Monitoring Point 6**Location: Bore 5201****Date data Published:** 03-Nov-23**Date data obtained by Licencee:** 12-Oct-23**Date Sampled:** 26-Sep-23

Pollutant	Unit	Monitoring frequency required by licence	Measurement
Alkalinity	mg/l	Yearly	190
Ammonia	mg/l	Every 6 months	0.022
Arsenic	mg/l	Yearly	0.004
Cadmium	mg/l	Yearly	<0.001
Calcium	mg/l	Yearly	39
Chloride	mg/l	Yearly	510
Chromium	mg/l	Every 6 months	<0.01
Fluoride	mg/l	Yearly	0.13
Iron	mg/l	Yearly	1.6
Lead	mg/l	Yearly	<0.01
Magnesium	mg/l	Yearly	39
Manganese	mg/l	Yearly	0.03
Mercury	mg/l	Yearly	<0.0001
Nitrate	mg/l	Every 6 months	0.006
pH	pH	Every 6 months	6.8
Potassium	mg/l	Every 6 months	5.7
Sodium	mg/l	Yearly	460
Standing Water Level	metres	Every 6 months	81.990
Sulphate	mg/l	Yearly	150
Total Dissolved Solids	us/cm	Every 6 months	1200
Total Organic Carbon	mg/l	Yearly	3.5
E.coli	per100ml	Every 6 months	<1

Monitoring Point 7**Location: Bore 5202****Date data Published:** 03-Nov-23**Date data obtained by Licencee:** 12-Oct-23**Date Sampled:** 26-Sep-23

Pollutant	Unit	Monitoring frequency required by licence	Measurement
Alkalinity	mg/l	Yearly	470
Ammonia	mg/l	Every 6 months	11
Arsenic	mg/l	Yearly	0.001
Cadmium	mg/l	Yearly	<0.001
Calcium	mg/l	Yearly	160
Chloride	mg/l	Yearly	1400
Chromium	mg/l	Every 6 months	<0.01
Fluoride	mg/l	Yearly	0.13
Iron	mg/l	Yearly	0.58
Lead	mg/l	Yearly	<0.01
Magnesium	mg/l	Yearly	190
Manganese	mg/l	Yearly	1.2
Mercury	mg/l	Yearly	<0.0001
Nitrate	mg/l	Every 6 months	0.073
pH	pH	Every 6 months	6.3
Potassium	mg/l	Every 6 months	23
Sodium	mg/l	Yearly	590
Standing Water Level	metres	Every 6 months	82.025
Sulphate	mg/l	Yearly	220
Total Dissolved Solids	us/cm	Every 6 months	3400
Total Organic Carbon	mg/l	Yearly	15
E.coli	per100ml	Every 6 months	<1

Monitoring Point 8**Location: Bore 2026****Date data Published:** 03-Nov-23**Date data obtained by Licencee:** 12-Oct-23**Date Sampled:** 26-Sep-23

Pollutant	Unit	Monitoring frequency required by licence	Measurement
Alkalinity	mg/l	Yearly	96
Ammonia	mg/l	Every 6 months	0.04
Arsenic	mg/l	Yearly	<0.001
Cadmium	mg/l	Yearly	<0.001
Calcium	mg/l	Yearly	260
Chloride	mg/l	Yearly	5600
Chromium	mg/l	Every 6 months	<0.01
Fluoride	mg/l	Yearly	<0.1
Iron	mg/l	Yearly	0.27
Lead	mg/l	Yearly	<0.01
Magnesium	mg/l	Yearly	630
Manganese	mg/l	Yearly	0.28
Mercury	mg/l	Yearly	<0.0001
Nitrate	mg/l	Every 6 months	<0.005
pH	pH	Every 6 months	6.0
Potassium	mg/l	Every 6 months	17
Sodium	mg/l	Yearly	2300
Standing Water Level	metres	Every 6 months	82.000
Sulphate	mg/l	Yearly	1300
Total Dissolved Solids	us/cm	Every 6 months	12000
Total Organic Carbon	mg/l	Yearly	2.6
E.coli	per100ml	Every 6 months	<1

Monitoring Point 9**Location: Bore 2027****Date data Published:** 03-Nov-23**Date data obtained by Licencee:** 12-Oct-23**Date Sampled:** 26-Sep-23

Pollutant	Unit	Monitoring frequency required by licence	Measurement
Alkalinity	mg/l	Yearly	72
Ammonia	mg/l	Every 6 months	0.046
Arsenic	mg/l	Yearly	<0.001
Cadmium	mg/l	Yearly	<0.001
Calcium	mg/l	Yearly	330
Chloride	mg/l	Yearly	6900
Chromium	mg/l	Every 6 months	<0.01
Fluoride	mg/l	Yearly	<0.1
Iron	mg/l	Yearly	0.08
Lead	mg/l	Yearly	<0.01
Magnesium	mg/l	Yearly	770
Manganese	mg/l	Yearly	0.34
Mercury	mg/l	Yearly	<0.0001
Nitrate	mg/l	Every 6 months	<0.005
pH	pH	Every 6 months	5.7
Potassium	mg/l	Every 6 months	22
Sodium	mg/l	Yearly	3100
Standing Water Level	metres	Every 6 months	81.930
Sulphate	mg/l	Yearly	1600
Total Dissolved Solids	us/cm	Every 6 months	14000
Total Organic Carbon	mg/l	Yearly	2.6
E.coli	per100ml	Every 6 months	4

Monitoring Point 10**Location: Bore 5203****Date data Published:** 03-Nov-23**Date data obtained by Licencee:** 12-Oct-23**Date Sampled:** 26-Sep-23

Pollutant	Unit	Monitoring frequency required by licence	Measurement
Alkalinity	mg/l	Yearly	380
Ammonia	mg/l	Every 6 months	1.1
Arsenic	mg/l	Yearly	<0.001
Cadmium	mg/l	Yearly	<0.001
Calcium	mg/l	Yearly	180
Chloride	mg/l	Yearly	1800
Chromium	mg/l	Every 6 months	<0.01
Fluoride	mg/l	Yearly	<0.1
Iron	mg/l	Yearly	0.17
Lead	mg/l	Yearly	<0.01
Magnesium	mg/l	Yearly	270
Manganese	mg/l	Yearly	1.2
Mercury	mg/l	Yearly	<0.0001
Nitrate	mg/l	Every 6 months	<0.005
pH	pH	Every 6 months	6.3
Potassium	mg/l	Every 6 months	18
Sodium	mg/l	Yearly	730
Standing Water Level	metres	Every 6 months	81.840
Sulphate	mg/l	Yearly	320
Total Dissolved Solids	us/cm	Every 6 months	4300
Total Organic Carbon	mg/l	Yearly	11
E.coli	per100ml	Every 6 months	<1

Monitoring Point 11**Location: Bore 2029****Date data Published:** 03-Nov-23**Date data obtained by Licencee:** 12-Oct-23**Date Sampled:** 26-Sep-23

Pollutant	Unit	Monitoring frequency required by licence	Measurement
Alkalinity	mg/l	Yearly	17
Ammonia	mg/l	Every 6 months	0.013
Arsenic	mg/l	Yearly	0.001
Cadmium	mg/l	Yearly	<0.001
Calcium	mg/l	Yearly	410
Chloride	mg/l	Yearly	4500
Chromium	mg/l	Every 6 months	<0.01
Fluoride	mg/l	Yearly	<0.1
Iron	mg/l	Yearly	0.2
Lead	mg/l	Yearly	<0.01
Magnesium	mg/l	Yearly	860
Manganese	mg/l	Yearly	0.27
Mercury	mg/l	Yearly	<0.0001
Nitrate	mg/l	Every 6 months	0.17
pH	pH	Every 6 months	5.6
Potassium	mg/l	Every 6 months	26
Sodium	mg/l	Yearly	1400
Standing Water Level	metres	Every 6 months	81.825
Sulphate	mg/l	Yearly	460
Total Dissolved Solids	us/cm	Every 6 months	9200
Total Organic Carbon	mg/l	Yearly	0.7
E.coli	per100ml	Every 6 months	<1

Monitoring Point 12

Location: Bore 9423

Date data Published: 03-Nov-23

Date data obtained by Licencee: 12-Oct-23

Date Sampled: 26-Sep-23

Pollutant	Unit	Monitoring frequency required by licence	Measurement
Alkalinity	mg/l	Yearly	380
Ammonia	mg/l	Every 6 months	7.9
Arsenic	mg/l	Yearly	<0.001
Cadmium	mg/l	Yearly	<0.001
Calcium	mg/l	Yearly	290
Chloride	mg/l	Yearly	2400
Chromium	mg/l	Every 6 months	<0.01
Fluoride	mg/l	Yearly	<0.1
Iron	mg/l	Yearly	0.19
Lead	mg/l	Yearly	<0.01
Magnesium	mg/l	Yearly	320
Manganese	mg/l	Yearly	1.5
Mercury	mg/l	Yearly	<0.0001
Nitrate	mg/l	Every 6 months	3.9
pH	pH	Every 6 months	6.4
Potassium	mg/l	Every 6 months	25
Sodium	mg/l	Yearly	1000
Standing Water Level	metres	Every 6 months	81.955
Sulphate	mg/l	Yearly	500
Total Dissolved Solids	us/cm	Every 6 months	5800
Total Organic Carbon	mg/l	Yearly	13
E.coli	per100ml	Every 6 months	<1

..... End of report